

# E35 (33 hp)

## Compact Excavator



The high-performing Bobcat E35 compact (mini) excavator features 33 hp engine for more usable power.

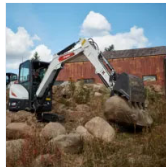
- Zero Tail Swing
- Angle blade option
- Long arm option
- Clamp-ready extendable arm option

[Build & Quote](#)

[Contact Dealer](#)

[View Offers](#)

[Find Dealer](#)



[Download Brochure](#)

## E35 (33 hp) Overview

- The 33-hp Bobcat® E35 compact (mini) excavator brings upgraded performance, enhanced productivity and even more usable power to the 3.5-ton size class.
- Zero tail swing provides unrestricted rotation, improved flexibility and minimized potential for damage to the machine and surrounding property.
- Choose from a range of options, including angle blade option, long arm option or clamp-ready extendable arm option.

## E35 (33 hp) Specifications

	E35 (33hp)	E35 (33hp, Long-Arm)	E35 (33 hp, Extendable Arm)
<b>E35 (33 hp) Key Specifications</b>			
Horsepower	33 hp	33 hp	33 hp
Operating Weight	7,893 lb	8,596 lb	8,824 lb
Bucket Digging			

Force	7,284 lbf	7,284 lbf	7,284 lbf
Maximum Reach at Ground Level	17 ft	18 ft	19.6 ft
Width	69.7 in	69.7 in	69.7 in
Tail Swing Type	Zero	Minimal	Minimal

### Engine ▲

Emissions Tier (EPA)	Tier 4	Tier 4	Tier 4
Engine Fuel	Diesel	Diesel	Diesel
Maximum Governed RPM	2,400 rpm	2,400 rpm	2,400 rpm
Horsepower	33 hp	33 hp	33 hp
Turbocharged Engine	yes	yes	yes
Optional Turbocharged Engine	N/A	N/A	N/A

### Performance ▲

Operating Weight	7,893 lb	8,596 lb	8,824 lb
Weight Class	3.6 t	3.9 t	4 t
Travel Speed - High	2.9 mph	2.9 mph	2.9 mph
Travel Speed - Low	1.6 mph	1.6 mph	1.6 mph
Arm Digging Force	4,690 lbf	4,074 lbf	4,592 lbf
Bucket Digging Force	7,284 lbf	7,284 lbf	7,284 lbf
Rated Lift Capacity	3318 lb	3206 lb	3058 lb
Lift Radius	118 in	118 in	118 in
Boom Swing - Left	75°	75°	75°
Boom Swing - Right	55°	55°	55°
Maximum Dig Depth	10.1 ft	11.1 ft	12.8 ft
Max Dump Height	11.4 ft	11.9 ft	12.9 ft
Maximum Reach at Ground Level	17 ft	18 ft	19.6 ft

### Capacities ▲

Fuel Tank	13.7 gal	13.7 gal	13.7 gal
<b>Hydraulic System</b> ▲			
Auxiliary Std Flow	16.9 gal/min	16.9 gal/min	16.9 gal/min
Auxiliary Pressure	2,987 psi	2,987 psi	2,987 psi
<b>Dimension</b> ▲			
Length	190 in	190.1 in	190.4 in
Overall Length in Travel Position	190 in	190.1 in	190.4 in
Width	69.7 in	69.7 in	69.7 in
Height	96.2 in	96.2 in	96.2 in
Height with Operator Cab	96.2 in	96.2 in	96.2 in
<b>Features</b> ▲			
Air Conditioning	Optional	Optional	Optional
Cab Enclosure	Optional	Optional	Optional
Cab Heater	Not Applicable	Not Applicable	Not Applicable
Heater Air Conditioning	Optional	Optional	Optional
Radio	Optional	Optional	Optional
Tail Swing Type	Zero	Minimal	Minimal
Engine Shutdown	Standard	Standard	Standard
Auxiliary Hydraulics	Standard	Standard	Standard
Secondary Auxiliary Hydraulics	Optional	Optional	Optional
Quick Tach System	Standard	Standard	Standard
Rubber Track	Standard	Standard	Standard
Selectable Auxiliary Hydraulic Flow	Standard	Standard	Standard
Angle Blade	Optional	Optional	Optional

## E35 (33 hp) Features & Benefits

Performance 13 ▾

Comfort 2 ▾

Uptime Protection 9 ▾

Serviceability 2 ▾

## E35 (33-hp) Attachments

[View All Attachments](#) >



**WARNING:** *This product can expose you to chemicals including engine exhaust (including diesel engine exhaust when equipped), lead and lead compounds, mineral oils, soots, phthalates, and carbon monoxide which are known to the State of California to cause cancer and birth defects or other reproductive harm. For more information go to [www.P65Warnings.ca.gov](http://www.P65Warnings.ca.gov).*

*Certain specification(s) are based on engineering calculations and are not actual measurements. Specification(s) are provided for comparison purposes only and are subject to change without notice. Specification(s) for your individual equipment will vary based on normal variations in design, manufacturing, operating conditions, and other factors.*